



# 2010 ASTORIA

## 3470 ASTORIA

CHASSIS	FREIGHTLINER
WHEELBASE	208
OVERALL LENGTH	35'6"
OVERALL WIDTH	101"
OVERALL HEIGHT WITH AC	127"
GVWR	28K
GCWR	33K
FRESH WATER	75 (GAL.)
WATER HEATER	10 (GAL.)
GREY/BLACK WATER	51 (GAL.)
LP (LBS.)	126
SLEEPING CAPACITY	4
EXTERIOR STORAGE	185 (CU. FT.)
INTERIOR DRAWERS	17
INTERIOR DRAWER CAPACITY	15.5 (CU. FT.)
FUEL CAPACITY	100 (APPROX. GAL.)



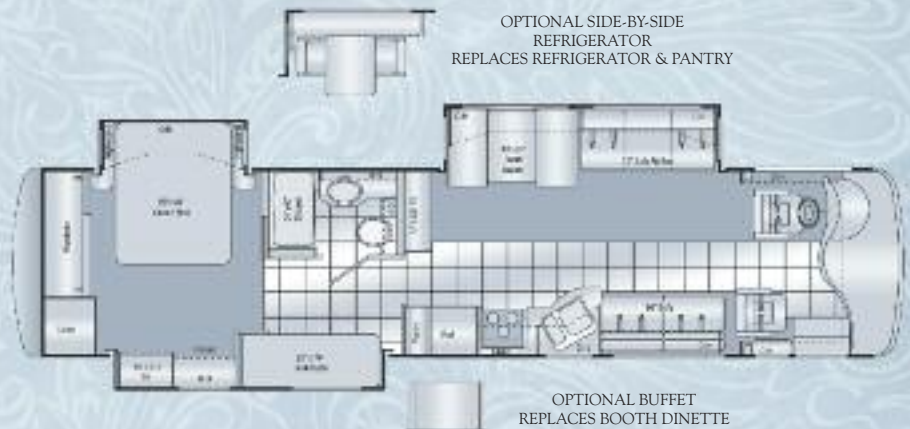
## 3772 ASTORIA

CHASSIS	FREIGHTLINER
WHEELBASE	248
OVERALL LENGTH	38'10"
OVERALL WIDTH	101"
OVERALL HEIGHT WITH AC	127"
GVWR	28K
GCWR	33K
FRESH WATER	75 (GAL.)
WATER HEATER	10 (GAL.)
GREY/BLACK WATER	51 (GAL.)
LP (LBS.)	126
SLEEPING CAPACITY	6
EXTERIOR STORAGE	185 (CU. FT.)
INTERIOR DRAWERS	16
INTERIOR DRAWER CAPACITY	18.5 (CU. FT.)
FUEL CAPACITY	100 (APPROX. GAL.)



## 3776 ASTORIA

CHASSIS	FREIGHTLINER
WHEELBASE	248
OVERALL LENGTH	38'10"
OVERALL WIDTH	101"
OVERALL HEIGHT WITH AC	127"
GVWR	28K
GCWR	33K
FRESH WATER	75 (GAL.)
WATER HEATER	10 (GAL.)
GREY/BLACK WATER	51 (GAL.)
LP (LBS.)	126
SLEEPING CAPACITY	8
EXTERIOR STORAGE	185 (CU. FT.)
INTERIOR DRAWERS	18
INTERIOR DRAWER CAPACITY	14.5 (CU. FT.)
FUEL CAPACITY	100 (APPROX. GAL.)



ALMOND CREAM



EVENING AUBURN



NIGHT WATCH

### CHASSIS

- Freightliner XC Raised Rail Chassis
- 340-hp Cummins Engine with 850 ft lb of Torque
- 160-amp, 12-volt Alternator
- In-Block, 750 Watt Engine Heater
- 6 Speed Allison MH-2500 Automatic Transmission
- 22.5" Radial Tires
- Stainless Steel Wheel Liners
- Full Air Brakes with Auto Slack Adjusters
- Air-Ride Suspension
- Haldex Purest Air Plus Heated Air Dryer
- Meritor Anti-Lock Brakes
- Exhaust Brake
- Sachs Shock Absorbers
- Under-Hood Light
- Dual Fuel Fills
- Emergency Start Circuit
- Front and Rear Mud Flaps
- Full Width Stainless Stone Guard with DAMON Letters
- 5,000 lb Trailer Hitch
- One Touch Fully Automatic 4 Point Leveling Jacks

### EXTERIOR

- Radius corner domed TPO roof
- Fiberglass Front and Rear Caps
- Tinted One Piece Windshield
- Black Framed Dual Pane Windows
- Full Body Paint with Gel Coat Wall
- Décors: Almond Cream, Evening Auburn, Night Watch
- Color Coordinated Awning Package Including Manual Entry Door Awning and Electric Patio Awning with Remote Control
- Slide Out Topper Awnings
- Fog Lights
- Two Patio Lights (One each side)
- Full Basement, Pass-Through Storage
- Locking Aluminum Compartment Doors
- Side-Hinged Compartment Doors (passenger side)
- Gas Pistons on Exterior Storage Doors
- Lighted Storage Compartments
- Rear Ladder

## STANDARD FEATURES & OPTIONS

### COCKPIT

- Electric Windshield Day/Night Privacy Shade
- Manual Side Shades
- 6 Way Power Nature's Alternative Leather Reclining Driver and Passenger Seats
- 3-Point Wall-Mounted Seat Belts
- Driver and Passenger Overhead Storage Cabinetry
- Drink holders
- Map Lights
- Padded Steering Wheel
- Tilt / Telescoping Steering Column
- Front Mount Power Heated Mirrors
- Premium AM/FM Radio with In-Dash CD Player and 3 Camera Back-up Monitor System with Audio
- Electronic Cruise Control
- Air Horn
- Electronically Controlled Dash Air Conditioning
- Dash Fans

### MULTIMEDIA

- 32" High Definition LCD TV in Living Area (3772)
- 42" High Definition LCD TV in Living Area (3470 and 3776)
- 19" High Definition LCD TV in Bedroom
- 19" High Definition LCD TV in Hallway (3776)
- 5.1 Surround Sound Home Theater with DVD/CD Player and Built-In Digital Tuner
- Cable TV/Satellite Control Center
- Satellite Dish Prep
- Satellite Receiver Pre-Wire in Bedroom

### INTERIORS AND FURNITURE

- Décors: Caribbean Bronze, Royal Crush, Tiger's Eye
- Solid Wood Raised Panel Cabinet Doors Throughout
- Corian Solid Surface Kitchen Countertop, Range Cover, and Sink Covers
- Mirrored Stove Backsplash
- Day/Night Shades in Living Area & Bedroom
- Mini Blinds in Kitchen
- Mini Blinds at Bunk (3776)
- Laminate Tile Floor in Entry, Living Area Aisle, Kitchen, and Bath
- 100% Nylon Carpeting w/ Stain Treatment and Padding
- Fluorescent Lighting in Living Area
- Living Room Pin-Up Lights
- Nature's Alternative Leather Loveseat (Passenger Side) (3772 and 3776)
- Nature's Alternative Leather Sofa/Air Bed (Passenger Side) (3470)
- Nature's Alternative Leather Sofa/Air Bed (Driver Side) (3772 and 3776)
- Dream Dinette with Wood Edge Table (3772 and 3776)
- U-Dinette (3470)
- Queen Bed with Innerspring Mattress
- Bedspread with Throw Pillows
- Bunk Beds (3776)

### KITCHEN

- 8 CuFt Large Flush-Mount, Double-Door Refrigerator w/ Raised Panel Hardwood Front
- Pantry Next to Refrigerator
- 3 Burner Cooktop

- 1.1 cu ft Space Saver Microwave/ Convection Oven
- Single Lever Faucet with Sprayer and Water Filter Faucet

### UTILITIES AND PLUMBING

- Dual 13.5 BTU Ducted Central Air Conditioning
- Fantastic® Power Vent in Kitchen
- Power vent in Bathroom
- 34,000 BTU Floor Ducted Electronic Ignition Furnace
- 50-AMP, 120-volt service
- Onan 6.0 kW Quiet Diesel Generator
- 1800-watt Inverter / 80-amp Converter
- (4) Interstate 6-volt Auxiliary House Batteries
- Battery Disconnect
- Exterior GFCI Receptacle
- Carbon Monoxide, LP Gas and Smoke Detectors
- Monitor Panel with LPG Readout
- 10-gallon Gas/Electric Water Heater with Electric Ignition with Blending Valve
- Water Heater By-Pass Kit
- Washer / Dryer Prep
- Full Height shower with Door
- Skylight in Shower
- Foot flush porcelain toilet with sprayer
- Enclosed Heated Potable and Holding Tanks
- Black Tank Flush
- 3-Way Tank/City Water Fill Valve
- Exterior Shower

### OPTIONS

- Invisible Bra
- 12 CuFt Four Door Refrigerator with Icemaker (deletes pantry)
- (2) Euro recliners (Driver Side) with Nature's Alternative Sofa/Air Bed (Passenger Side) (3772)
- Buffet with Additional Storage and Four Chairs (2 Fixed & 2 Folding) (3772 & 3776)
- AM/FM stereo / CD/DVD Player in Bedroom
- (2) Heat pumps
- Onan 8.0 kW Quiet Diesel Generator
- CSA Construction and Seal

YOUR LOCAL ASTORIA DEALER:



**MORE DETAILS ONLINE** Visit us online for more information about Damon products. Learn about each of Damon's Gas and Diesel Class-A models as well as the exciting new Avanti fuel-efficient clean diesel. Once online, you can take virtual tours, explore 360° viewable interiors, see additional features and find more for less, at: **ASTORIARV.COM**



P.O. BOX 2888 • ELKHART, IN 46515 • CUSTOMER SERVICE: 800-860-3812 • SALES DEPARTMENT: 800-860-5658 • DAMONRV.COM

